

**AMERICAN HEREFORD ASSOCIATION**  
 11500 N Ambassador Drive, Suite 410, Kansas City, Missouri 64153  
**PERFORMANCE PEDIGREE**

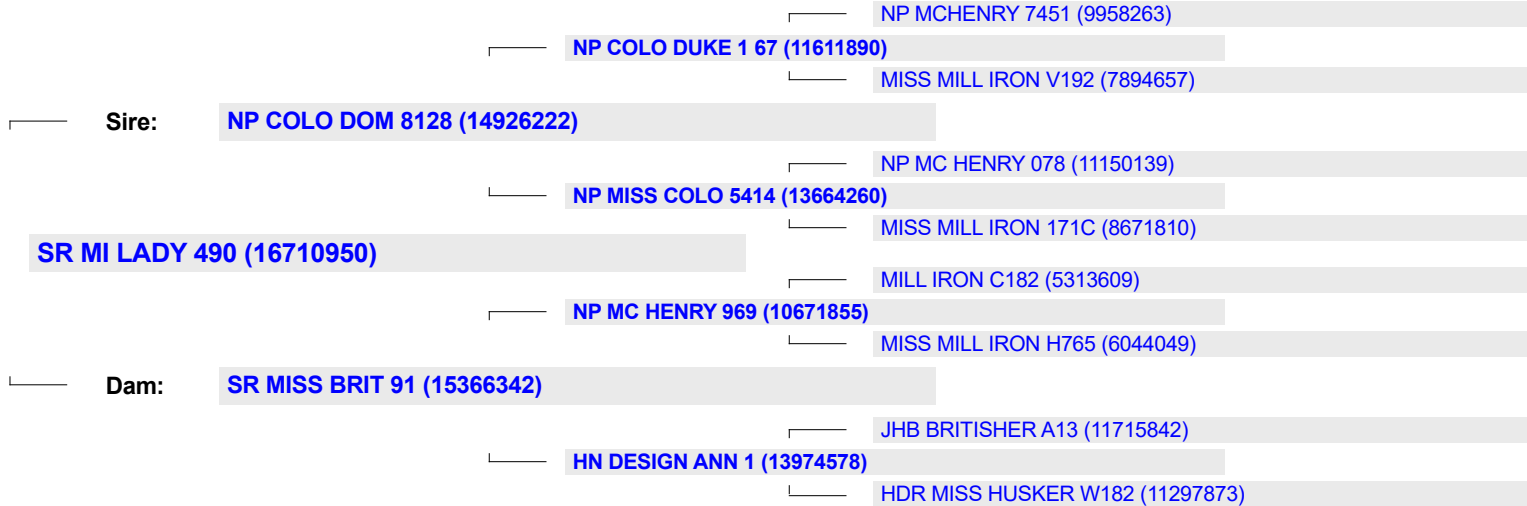
**NAME:** SR MI LADY 490  
**CALVED:** May 17, 1974  
**BREEDER:** STUBER RANCH

**TATTOO RE:** 490

**SEX:** COW  
**LE:** 490  
**OWNER(S):** STUBER RANCH

**HPS:** HORNED  
**REGISTRY NUMBER:** 16710950

EPD VALUES	CE EPD	BW EPD	WW EPD	YW EPD	DMI EPD	SC EPD	SCF EPD	MM EPD	MG EPD	MCE EPD	MCW EPD	UDDR EPD	TEAT EPD	CW EPD	FAT EPD	REA EPD	MARB EPD	BMI\$	BI\$	CHB\$
ANIMAL	+3.0 (.02)	+2.5 (.04)	+20 (.03)	+38 (.03)	-0.4 (.01)	+0.2 (.02)	+20.2 (.02)	+12 (.03)	+22 (-)	+1.7 (.02)	+54 (.02)	+1.00 (.04)	+1.00 (.03)	+41 (.01)	-0.045 (.02)	+0.16 (.01)	+0.09 (.02)	+376 (-)	+\$414 (-)	+\$87 (-)
SIRE																				
DAM																				



	ANIMAL PERFORMANCE			PROGENY AVERAGES			SIRE PERFORMANCE	PROGENY AVERAGES			DAM PERFORMANCE	PROGENY AVERAGES		
	NUMBER	NUMBER	AVERAGES	NUMBER	NUMBER	AVERAGES		NUMBER	NUMBER	AVERAGES				
Birth Wt. (%)		7	107.4											
Weaning Wt. (%)	106.0	8	108.3		8	99.5					8	106.0		
Yearling Wt. (%)	97.0	8	105.4		3	98.3					7	101.1		
Yearling Ht. (Frame)														
Yr. Scr. Cir. (cm)														
Fat Depth (%)														
Ribeye Area (%)														
IMF (%)														
	Daughters	Calves	Ratio	Daughters	Calves	Ratio	Daughters	Calves	Ratio	Daughters	Calves	Ratio		
	4	30	104.7	3	11	104.5	4	20	100.0					



PERFORMANCE AS OF: Apr 08, 2026

SECRETARY, AMERICAN HEREFORD ASSOCIATION